



Bee-Yond Wonderful Bee Farm
 McDonough, GA 30253
 Covington, GA 30014
 404-372-8295



2009 PRICE LIST

Web Page www.beeyondwonderful.com

Mike Sorensen

email: mtsorensen@bellsouth.net

<u>CAT.#</u>	<u>ITEM</u>	<u>DESCRIPTION</u>
--------------	-------------	--------------------

HIVES & KITS:

HK050	Starter Kit	\$150.95
-------	-------------	----------

HK050A	Assembled	\$165.95
--------	-----------	----------

Shipping wt. 39lbs

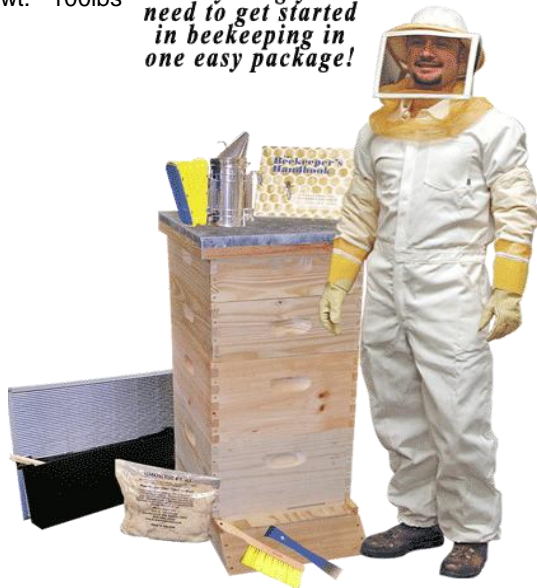


Basic Starter Kit Basic Starter Kit HK050 The Basic Starter Kit Includes: The Complete Hive Body Kit: • 1 9 5/8" Hive Body • 10 9 1/8" #1 Frames • 10 8 1/2" Waxed Rite-Cell® Foundation • 1 Assembled Telescoping Cover • 1 Assembled Inner Cover • 1 Bottom Board • 1 Entrance Reducer Plus These Additional Items: • 1 Boardman Entrance Feeder • 1 10" Hive Tool • 1 Pair Economy Leather Gloves Size Large • 1 Alexander Bee Veil • 1 Pro-Bellow Smoker w/Guard • 1 The New Starting Right With Bees Prices do not include shipping charges. If you're looking to get started on a budget, this is a great way to begin! This kit includes gloves and a veil (you will need to wear heavy clothing for added protection), hive tool, smoker, the booklet The New Starting Right with Bees, boardman entrance feeder and all of the woodenware found in the complete hive kit. About a month after installing your bees, you will need to add another brood chamber and then supers when nectar flows occur.

HK060	Delux beekeeping Starter Kit	\$385.95
-------	------------------------------	----------

Shipping wt. 100lbs

Everything you need to get started in beekeeping in one easy package!



Deluxe Starter Kit Beekeeping Starter Kit HK060 Deluxe Starter Kit Includes: The Growing Apiary Kit: • 2 9 5/8" Hive Bodies • 2 6 5/8" Supers • 20 9 1/8" #1 Frames • 20 8 1/2" Waxed Rite-Cell® Foundation • 20 6 1/4" #1 Frames • 20 5 5/8" Waxed Rite-Cell® Foundation • 1 Assembled Telescoping Cover • 1 Assembled Inner Cover • 1 Bottom Board • 1 Entrance Reducer • 1 Hive Stand The Clothing Starter Kit: • 1 Cotton/Poly Coverall With Elastic At Cuffs And Foot Openings (state your size SM, M, L, XL, XXL) With Attached Zipper Veil • 1 Mesh Helmet • 1 Pair Vented Leather Gloves (state your size) Plus These Additional Items: • 1 Pro-Feeder® w/Float • 1 Metal Queen Excluder • 1 4" x 7" Stainless Steel Smoker w/Guard • 1 Package Smoker Fuel • 1 10" Hive Tool • 1 Bee Brush • 1 Beekeeper's Handbook Please state suit and glove sizes in the special instructions section at the time of checkout. If you want a complete package to get started in beekeeping, this is the kit for you! This kit includes a complete clothing starter kit, all of the woodenware found in the growing apiary kit, as well as the basic tools needed for beekeeping. You will want to read your terrific educational book, "The Beekeeper's Handbook", right away in order to prepare yourself for your new adventure in beekeeping! order your bees and get started in one of the most fascinating hobbies on earth! Shipping weights will be a total of 3 packages 1 at 14 lbs., 1 at 41 lbs., and 1 at 50 lbs. with Wood Frames; total of 3 packages 1 at 15 lbs., 1 at 36 lbs. and 1 at 40 lbs.

CAT.#**ITEM****DESCRIPTION**

HK100 Deep Hive Kit \$83.95

HK100A Deep Hive Kit Assembled \$98.95

Shipping wt. 36lbs



Hive Body Kit - Wood Frames Complete Hive Body Kit 9 5/8" HK100 Start a new colony with our Complete Hive Kit. Once your bees draw out most of the foundation, you can add a second deep hive body. • 1 9 5/8" Hive Body • 10 9 1/8" #1 Frames • 10 8 1/2" Waxed Rite-Cell® Foundation • 1 Assembled Telescoping Cover • 1 Assembled Inner Cover • 1 Bottom Board • 1 Entrance Reducer

HK901 Garden Hivery \$115.95

HK901 Garden Hivery Assembled \$130.95

Shipping wt. 48lbs.



Who says a colony of bees can't be an elegant display in your yard? With our beautiful Garden Hivery, your grounds can be enhanced by both the pollination taking place and the upscale look of your colony. The hive shown here is finished with our Quick Coat Natural Stain. Ships 2 packages 1 at 24 lbs. & 1 at 21 lbs. • 1 Garden Hivery Copper Cover • 1 9 5/8" 10 Frame Hive Body • 10 9 1/8" #1 Frames • 10 8 1/2" Waxed Foundation • 1 Assembled Inner Cover • 1 Assembled Bottom Board • 1 Entrance Reducer Pollination Or Decoration

HK140 Complete Beehive Kit \$215.95

Shipping wt. 103lbs



One Complete Hive Body Kit:

- 1 9 5/8" Hive Body
- 10 9 1/8" #1 Frames
- 10 8 1/2" Waxed Rite-Cell® Foundation
- 1 Assembled Telescoping Cover • 1 Assembled Inner Cover
- 1 Bottom Board • 1 Entrance Reducer Two 6 5/8" Super Kits:
- 2 6 5/8" Super • 20 6 1/4" #1 Frames
- 20 5 5/8" Waxed Rite-Cell® Foundation

One 9 5/8" Hive Body Kit:

- 1 9 5/8" Hive Body
- 10 9 1/8" #1 Frames
- 10 8 1/2" Waxed Rite-Cell® Foundation Also Includes:

- 1 Hive Stand Are you looking to add a new colony this season?

With our Growing Apiary Kit, it couldn't be more effortless! You will have all of the woodenware needed for a season of beekeeping with a new package or nuc. Your new colony should fill up the first brood chamber within a month, at which time you will need to add your second deep box and turn the entrance reducer from the smallest opening that you started with, to the middle-sized opening. You will want to continuously feed your colony sugar syrup while they are drawing out the comb. It takes a lot of energy to make wax! When nectar flows occur, you will need to add your honey supers and remove the entrance reducer completely until fall.

CAT.#

ITEM

DESCRIPTION

HK200 9 5/8 Super Kit \$50.95
HK200A Assembled 9 5/8 Super Kit \$65.95

Shipping wt. 18lbs



Wood Frames This Deep Hive Body Kit can be added to your standard 10 frame equipment to replace an old brood chamber or added on as a second story to an expanding colony. Ship wt. 21 lbs. • 1 9 5/8" Hive Body • 10 9 1/8" #1 Frames • 10 8 1/2" Waxed Rite-Cell® Foundation

HK400 6 5/8 Super Kit \$47.95
HK200A Assembled 6 5/8 Super Kit \$62.95

Shipping wt. 14lbs



• 1 6 5/8" Super • 10 6 1/4" #1 Frames • 10 5 5/8" Waxed Foundation
- Wood Frames

HK600 5 11/16 Super Kit \$40.95
HK600A Assembled 5 11/16 Super Kit \$55.95

Shipping wt. 14lbs



Shallow Super w/Frames and Foundation Shallow Super with 10Frames and Foundation

CL001 Delux Clothing Starter Kit \$115.50

Shipping wt. 5lbs



Clothing Starter Kit For those who prefer the cotton suit, we now have a kit for you! Kit Includes: • White Vented Mesh Helmet • Cotton Deluxe Bee Suit With • Attached Zipper Veil (state size) • Heavy Duty Vented Leather Gloves (state size) Please state suit and glove sizes in the special instructions section at the time of checkout.

MS001 Bee Farm Mail Box \$71.95

Shipping wt. 20lbs



This beautiful Copper Topped mailbox is 20" long by 9 1/4" wide and 13" tall. It is constructed from select pine and cypress. A magnetic latch holds the front door shut. You will have to mount and paint it yourself but you will be very proud of how it looks. Non-Beekeepers will also appreciate this beautiful Mailbox.

CAT.#**ITEM****DESCRIPTION****HIVE PARTS**

HP010 9 5/8 Deep Super (Commercial) 1-24 \$17.95 ea.
 HP010A 9 5/8 Deep Super (Commercial) 25+ \$16.95 ea.

10-Frame Empty Unassembled DT Hive Body Standard
 10-frame Empty Unassembled DT Hive body. Uses 9-1/8" frames. (Nails Not Included) Made from white pine.

Shipping wt. 9lbs. Each



HP030 6 5/8 Super (Commercial) 1-24 \$13.95 ea.
 HP030A 6 5/8 Super (Commercial) 25+ \$12.95 ea.

10-Frame Commercial Unassembled Medium DT Super
 Commercial grade unassembled Medium Dovetailed super. Uses 6-1/4" nails. (nails not included) Made from white pine.

Shipping wt. 5lbs. Each



HP050 5 11/16 Shallow Super (Commercial) 1-24 \$10.95 ea.
 HP050A 5 11/16 Shallow Super (Commercial) 25+ \$9.95 ea.

10-Frame Commercial Unassembled Shallow DT Super
 Commercial grade unassembled Shallow Dovetailed super. Uses 5-3/8" frames. (nails not included) Made from white pine.

Shipping wt. 4lbs. Each



HP950 Wooden Nuc Boxes 9 1/8 Commercial 1-24 \$25.95 ea

- Unassembled commercial grade nuc box.
 - Holds five 9 1/8" frames.
 - Hand holds on two sides for easy carrying.
 - Assembled Bottom Board.
 - Assembled Migratory Cover.
- FRAMES NOT INCLUDED.

Shipping wt. 15lbs



HP950C 5 Frame Cardboard Nuc Box \$8.95 ea.

Shipping wt. 3lbs ea.






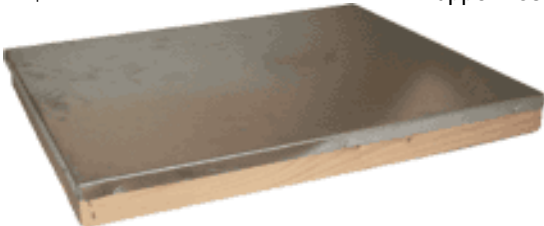


The unit is excellent for making splits, selling splits, queen banks, hiving swarms, bait hives and for pollination units. The Splitter is excellent for drawing foundation with a strong unit. Frames not included.

HP100 Pine Hive Stand With Landing Board \$13.95 ea.

Shipping wt. 5lbs ea.



Our Hive Stand features a sloping plane to allow your bees easy access to the hive and it also serves to raise your hive off of the ground. Sold unassembled

<u>CAT.#</u>	<u>ITEM</u>	<u>DESCRIPTION</u>
HP115 IMP Bottom Board 1-24	\$16.95 ea.	Designed to aid in your integrated pest management program. The Varroa Mite falls off the bee and falls through the screen to the ground and dies, thereby reducing the population of mites in the hive. A removable plastic sheet allows you to count the mites when in place. Sheet should only be in place when you are monitoring mites. The added ventilation from the screen increases brood production in the hive
HP115A IMP Bottom Board 25+	\$15.95 ea.	
Shipping wt.	8lbs ea.	
HP111 Entrance Reducer	\$1.99 ea.	The entrance reducer is a very important piece of equipment. When colonies are weak or being feed, the entrance must be reduced. Our reducer has two different sized openings that can be used throughout the season for different applications.
Shipping wt.	1lbs ea.	
		
HP130 Assembled Inner Cover	\$ 11.90 ea.	Assembled Inner Cover Preserves the interior bee space when used with the Telescoping Cover or Hivery Cover and can also be used to clear bees from the supers with a bee escape.
Shipping wt.	3lbs ea.	
		
HP140 Telescoping metal cover 1-24	\$23.95 ea.	Telescoping Cover Top lip extends down around the uppermost box, this cover has a galvanized metal top, completely assembled.
HP140A Telescoping metal cover 25+	\$22.95 ea.	
Shipping wt.	10 lbs ea.	
HP902 Garden Hivery Cover	\$59.95	10 Frame English Copper Top We introduced the English Copper Top in 2000 and it was the best then and it continues to be the best, even though others have copied it. The roofing boards are screwed onto the rabbeted frame and each piece is glued and nailed. We cover in copper and it will take on a beautiful patina after a year or you can apply an agent that will turn it green. Please note: Copper will spot from fingers or water. Clean with copper cleaner. We will not accept returns on spots, imperfections or scratches in the copper.
Shipping wt.	15 lbs ea.	
		
HP150 Migratory cover	\$14.95 ea.	Our migratory Top Cover will serve you well, allowing your colonies to be tightly spaced on pallets. Ships assembled. 3/4" tongue & groove construction. Constructed using screws and glue.
Shipping wt.	8 lbs ea.	
		

CAT.#**ITEM****DESCRIPTION****FRAMES & FOUNDATION**

Divided Bottom Bar Frames 1- 49 \$ 1.00 ea.

Divided Bottom Bar Frames 50+ \$ 0.95 ea.

HP300D Frames 9 1/8

HP310D Frames 6 1/4

HP320D Frames 5 3/8

Shipping wt. .5 lbs ea.



Solid Bottom Bar Frames 1- 49 \$ 1.00 ea.

Divided Bottom Bar Frames 50+ \$ 0.95 ea.

HP300S Frames 9 1/8

HP310S Frames 6 1/4

HP320S Frames 5 3/8

Shipping wt. .5 lbs ea.



HP400W	9 1/8 Molded Plastic Frames & Found.	1-49	One-Piece Deep	\$2.40	0.9
		50+	One-Piece Deep	\$2.30	0.9
HP410W	6 5/8 Molded Plastic Frames & Found.	1-99	One-Piece Medium	\$2.20	0.7
		100+	One-Piece Medium	\$2.19	0.7
HP450	Frame Spacers	1	9 Frame	\$0.75	0.1
HP455	Frame Rests	1	Metal	\$0.60	0.5
HP500	Foundation 8 1/2 wired with hooks	1-49	Deep	\$1.20	0.2
		50+	Deep	\$1.15	0.2
HP800	Small Cell Wired Foundation		8 1/2 Deep 4.9mm wired	\$1.49	0.2
HP801	Small Cell Foundation		8 1/2 Deep 4.9mm unwired	\$1.49	0.2
HP510	Foundation 5 5/8 wired with hooks	1-100	Medium	\$0.87	0.5
		100+	Medium	\$0.83	0.5
HP520	Foundation 4 3/4 wired with hooks	1-100	Shallow	\$0.87	0.5
		100+	Shallow	\$0.83	0.5
HP590	Deep Brood Foundation 8 1/2	1-50	No Wires	\$1.00	0.2
		50+	No Wires	\$0.98	0.2
HP600	Cut Comb Foundation 5-5/8 (Medium)	1-99	(medium) 5 5/8"	\$0.51	0.2
		100+	(medium) 5 5/8"	\$0.47	0.2
HP610	Comb Foundation 4-3/4 (Shallow)	1-99	(Shallow) 4 3/4"	\$0.51	0.2
		100+	(Shallow) 4 3/4"	\$0.47	0.2
HP700W	Rite Cell 8 1/2 Foundation-Waxed	1-99	Wax Coated Plastic - White	\$1.30	0.5
		100+	Wax Coated Plastic - White	\$1.25	0.5
HP700B	Rite Cell 8 1/2 Foundation-Waxed	1-99	Wax Coated Plastic - Black	\$1.30	0.5
		100+	Wax Coated Plastic - Black	\$1.25	0.5
HP710W	Rite Cell 5 5/8 Foundation-Waxed	1-99	Wax Coated Plastic	\$1.30	0.4
		100+	Wax Coated Plastic	\$1.25	0.4
HP725W	Shallow Snap In Foundation	1-99	Wax Coated Plastic	\$1.15	0.4
		100+	Wax Coated Plastic	\$1.10	0.4
HP770	Duragilt 8 1/2 Foundation	1	Wax With Plastic Core	\$1.10	0.2
		50+	Wax With Plastic Core	\$1.08	0.2
HP780	Duragilt 5 5/8 Foundation	1-99	Wax With Plastic Core	\$0.74	0.2
		100+	Wax With Plastic Core	\$0.72	0.3
HP790	Duragilt 4 3/4 Foundation	1-99	Wax With Plastic Core	\$0.65	0.4

CAT.#

ITEM

DESCRIPTION

TRAPS & OBSERVATION

HP840 Propolis Trap \$11.75

Shipping wt. 5 lbs.



• Flexible plastic lasts for years. • Position in place of inner cover, smooth side up. • Fits standard 10 frame equipment. Fits all standard 10 Frame equipment. Note: Autumn is the typical peak propolis production time of year. Hive body not included.

HP851 Deluxe Pollen Trap \$77.50

Shipping wt. 20 lbs.



You set this 10 frame trap on a bottom board as shown in the picture. You then set a hive body on top. there is a 3/4" opening that runs the length of the top front edge of the pollen trap into which you insert the "Door". When you want to stop trapping pollen you take the door out and put it in the 3/4" opening in the bottom board.

HP900 Observation Hive \$141.50

Shipping wt. 54 lbs.



We include a deep division board feeder but no frames. It is the perfect traveling observation hive. Some queen breeders also use it to isolate the queen to have eggs the same age for grafting. PLEASE NOTE THIS PRODUCT SHIPS AT THE 54 LB.

FEEDERS

HP930 Boardman Feeder \$4.50

Shipping wt. 2 lbs.



This feeder allows you to use your own Mason" type jar or 5# round jar for feeding at the entrance of your hive. This feeder is not recommended for cold weather feeding. Glass jar not included.

HP931 Feeder Pail 1 gal. \$8.75

Shipping wt. 2 lbs.

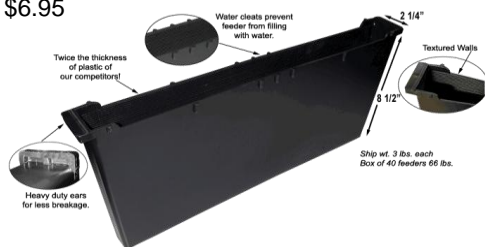


Holds 1 gal. syrup. Snap top closed and place over hole in inner cover. You can use 2 empty supers or 1 empty hive body to enclose feeder.

HP935 Division Board Feeder-Deep \$6.75

HP937 Division Board Feeder-Medium \$6.95

Shipping wt. 4 lbs.




Interior walls are extra rough for bee mobility • Rain shields prevent water buildup • Extra heavy walls hold shape better • Heavy duty ears mean less breakage

<u>CAT.#</u>	<u>ITEM</u>	<u>DESCRIPTION</u>
HP938 Top Feeder \$24.50		<p>Top Feeder comes completely assembled and ready to use. Holds up to 4 gallons of syrup and features a galvanized steel safety screen to prevent drowning of bees! This feeder is constructed of a heavy-duty, single piece plastic to provide a no-leak reservoir! Wooden surround measures 4 1/2" x 19 5/8" and fits all standard 10 frame equipment.</p>
Shipping wt. 20 lbs.		

EXCLUDERS

HP910W Queen Excluder (Wood Frame) \$15.95 ea.		<p>Wood Bound Queen Excluder Improved style of queen excluder with a wire grid that provides perfect bee space. Wooden frame is around the wire grid. Wire grid is bent on one side so the grid will lay flat over top bars to keep down burr comb.</p>
Shipping wt. 4 lbs.		
Queen Excluder (Metal Frame) \$10.95 ea.		<p>Metal Queen Excluder New style Metal Excluder. Does not have metal frame around it. Grids are reinforced with heavy metal cross wires that keep it perfectly spaced.</p>
Shipping wt. 4 lbs.		

BOOKS

BP020 ABC and XYZ of Bee Culture \$75.95		<p>ABC and XYZ of Bee Culture The Beekeeper's Handbook This A to Z classic in its 40th edition is the honeybee encyclopedia for any beekeeper regardless of experience.</p>
Shipping wt. 2 lbs.		
BP030 The Backyard Beekeeper \$25.95		<p>The Backyard Beekeeper This is a great beginner's guide to beekeeping written in a fresh, easily readable style. Contains little tidbits that even longtime beekeepers may not know! Full color photos take you from bee behavior to the bee hive and then through the products of the hive with recipes and beeswax candle tips.</p>
Shipping wt. 2 lbs.		
BP100 Honey Bees and Beekeeping \$25.95		<p>Honeybees & Beekeeping (A Year in the Life of an Apiary) This 3rd edition book by Dr. Keith Delaplane from the U of GA, wonderful</p>
Shipping wt. 2 lbs.		

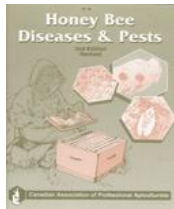
CAT.#

ITEM

DESCRIPTION

BP300 Honey Bee Diseases and Pests \$8.95

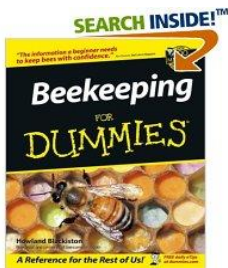
Shipping wt. 2 lbs.



Honey Bee Diseases & Pests 2nd Edition This is a terrific reference book for pests and diseases. Concisely written with full color photographs, this is an excellent diagnostic tool.

BP400 Beekeeping for Dummies \$25.95

Shipping wt. 2 lbs.



Beekeeping For Dummies is a honey of a book on an increasingly popular hobby. For both enjoyment and profit, beekeeping has become a booming enterprise. This easy-to-follow guide removes the mystery from this pastime. Realize the benefits of keeping bees, from aiding the environment to enjoying homemade honey and wax products. Beekeeping For Dummies includes detailed, full-color photographs that show how to install a package of bees in your hive, what to expect from your bees (they are incredibly well-tempered during swarming!), and how to spot-and solve-common beekeeping problems.

TOOLS

TA010 Hive Tool 10" \$5.50

Shipping wt. 1 lbs.



10" Hive Tool • Strong spring steel • Large hook end for prying

TA601 Hive Tool Holster \$13.50

Shipping wt. 1 lbs.



Hive Tool Holster Are you tired of losing hive tools? Keep it in a holster and never lose another hive tool again. Holster will slip through your belt and your hive tool will be there when you need it.

TA012 Frame Lifter Hive Tool \$11.50

Shipping wt. 1 lbs.



Frame Lifter Hive Tool The Frame Lifter Hive Tool is of superior design. It has 2 cutting edges on the end of the tool, both of which are beveled. This type of edge scrapes up wax and propolis much easier. The curved end lifts frames out by wedging out the top bars.

TA013 Bridge Comb Cleaner \$8.95

Shipping wt. 1 lbs.




Cleans propolis and wax from hard to reach area in frames. Works great for cleaning wax out of grooved or divided bottom bar.







TA016 Frame Spacing Tool (9 Frame) \$24.95

Shipping wt. 1 lbs.



Manually space 9 frames in your 10 frame equipment. This heavy duty stainless steel spacing tool slides across your frames easily to give extra spacing that uncapping equires. Many say that two of these work better placing one at each end of your supers.

<u>CAT.#</u>	<u>ITEM</u>	<u>DESCRIPTION</u>
TA202	Frame grip \$19.95 Shipping wt. 3 lbs.	Used to grip frames when pulling out of hive. 
TA200	Frame Wire \$6.75 Shipping wt. 2 lbs.	Tinned wire for Wiring Foundation into Frames. Wiring strengthens the foundation for extracting honey. 1/2 pound of frame wire will wire 100 frames. Image shows half pound and one pound rolls of wire. 
TA210	Eyelets pk 100 \$2.35 Shipping wt. 1 lbs.	Eyelets are small metal fittings placed in the holes of the end bars to prevent the frame wire from cutting into the end bars. Ours are Zinc which are paraffined for easy handling. 
TA212	Eyelet Tool \$3.95 Shipping wt. 1 lbs.	Eyelet Punch The Eyelet punch is a tool to help fit the eyelets into the holes in the end bars. 
TA220	Spur Wire Embedder \$10.95 Shipping wt. 1 lbs.	Tool for embedding wire into foundation. With practice, it works very well. Frame and foundation must be supported on a form board. Heating helps embedder work faster. 
TA230	Support Pins pk 100 \$6.25 Shipping wt. 1 lbs.	Support pins 100 pack Pins work well to hold foundation straight in the brood chamber, but we recommend wiring to hold foundation securely in extracting frames. Pins fit through the holes in end bars. 
TA300	Bee Brush \$5.95 Shipping wt. 1 lbs.	Bee Brush • Soft bristles to gently remove bees from frames 
TA400	Smoker 4X10" with guard \$38.95 Shipping wt. 3 lbs.	Stainless Steel Smokers • Best value in the industry • Heavy duty stainless steel construction • Easy open lid tab • Heavy duty hinge • Lower bracket placement for burn-free fingers 4" x 10" With Guard 
TA402	Smoker 4X7" with guard \$35.95 Shipping wt. 3 lbs.	Stainless Steel Smokers • Best value in the industry • Heavy duty stainless steel construction • Easy open lid tab • Heavy duty hinge • Lower bracket placement for burn-free fingers 4" x 7" With Guard 

<u>CAT.#</u>	<u>ITEM</u>	<u>DESCRIPTION</u>
TA430	Smoker Fuel: Cotton Cylinders \$5.50 Shipping wt.1 lbs.	Smoker fuel is clean, raw, short cotton fibers. 100% pure compressed cotton. This smoker fuel burns from the top of the plug down. 
TA432	Smoker Fuel: Wood Pellets 5lb. bag \$6.95 Shipping wt.6 lbs.	• Compressed wood pellets burn clean 
TA600	Frame Perch \$21.95 Shipping wt.3 lbs.	Do you hate crushing the bees when you inspect them and getting trash on the bottom of your frames when you set them on the ground? Then this Frame Perch is for you. Hook this frame perch over the long side of your hive body or super and hang the frames on it as you inspect. Constructed of steel, painted white. Will hold 4 frames. Hive body not included. 
HP945	Mouse guard \$6.95 Shipping wt.1 lbs.	Universal Entrance Reducer and Mouse Guard These reducers will fit either 8 or 10 frame hives due to their sliding adjustable design. They are constructed from two pieces of 24 gauge steel with a baked on enamel finish and are peppered with 3/8" holes for the bees to enter and keep the mice out. 
HP075	Hive Staples (1 Lb.) \$7.85 Shipping wt.1 lbs.	Heavy-duty, 12 gauge copper staples allow you to fasten your hive bodies together for transit. 
HP940	Bee Escape \$3.55 Shipping wt.1 lbs.	The Bee Escape works as a one way door to let bees out but not back in. Plastic escape fits into the hole in inner cover. 

QUEEN SUPPLIES

TA500	Queen Catcher	1	\$10.95	0.3
TA601	Queen Marking Tube	1	\$8.95	1
TA602	Queen Marking Pen	1	\$10.50	1
QR100	Chinese Grafting Tool	1	\$5.95	1
TA603	Queen Cups	1	\$9.95	1

<u>CAT.#</u>	<u>ITEM</u>		<u>DESCRIPTION</u>		
<u>SWARM SUPPLIES</u>					
MC910	Swarm Lures	1	ea.	5.95	0.5
MC915	Swarm Trap	1	Give a swarming colony an ideal "home"!	20.95	48
MC918	Swarm Retrifer	1	5 gal pail w/ a flip top on a rod to get high	35.95	15
MC919	Bee Vac	1	Vacuum up that swarm into a cage in a 5 gal.	105.95	20

EXTRACTING & PROCESSING

EP002	Comb Honey Cutter	1	Cuts comb honey into sections	\$13.95	1
EP005	Uncapping Knife	1	Heat with hot water	\$23.95	2
EP008	Capping Scratchier	1		\$10.95	1
EP010	Uncapping Knife-Electric	1	Electric with heat control element	\$99.95	5
EP110	3100H Extractor-Maxant	1	3 deep-6 medium/shallow: Semi-Radial	Call	70
EP130	1400-P Extractor-Maxant	1	10 deep-20 medium/shallow. Radial,	Call	Truck
EP380	Nylon Honey Gate-Maxant	1		\$12.95	2
EP500	Double Sieve 9"-Maxant	1	2 stage sieve	\$45.95	3
EP550	Nylon strainer bags for 5 gal pail	1		\$17.95	0.5
EP560	Strainer Bucket, Bottling Pail & Gate	1	Great for the starting beekeeper	\$62.95	7
EP570	Bottling Pail With Honey Gate & Lid	1	5 Gallon Capacity	\$27.95	4

Additional Extracting Equipment Upon Request

CLOTHING

CL100	Round Veil	1	Hat Not Included	\$16.95	1
CL104	Bee Hat	1	Vented, White Plastic	\$11.50	2
CL120	Alexander Veil	1		\$19.95	1
CL200	Canvas Gloves	1	S, M, L (Specify Size)	\$16.75	1
CL210	Ventilated Leather Gloves	1	S, M, L, XL (Specify Size)	\$26.95	2
CL220	Economey Leather Gloves	1	M, L, XL (Specify Size) - Great Value	\$16.95	2
CL300	Slip on sleeves	1	Keeps Bees Out Of Sleeves	\$15.95	0.5
CL320	Leg Straps	1	Keeps Bees Out Pant Legs	\$4.50	0.5
CL355	Deluxe Bee Suit With Veil	1	S, M, L, XL, XXL - Keeps bees out	\$67.95	4
CL356	Economey Hooded Jacket	1	Half jacket w/ zipper veil	\$65.95	4
CL999	Brazilian Beesuit	1	most stingless suit on the market.	\$195.50	5

MEDICATIONS & SUPPLEMENTS

MC001	Bee-Pro Pollen Substitute	1	1 Lb. Bag (1/2 Pound/Colony)	\$8.95	2
MC010	Bee-Pro Pollen Substitute	1	10 Lb. Bag (1/2 Pound/Colony)	\$25.95	11
MC210	Terramycin Powder	1	6.4 oz.	\$6.85	1
MC220	Terra Pro	1	1 lb. Can Medicated Feed (24 Treatments)	\$8.95	2
MC300	Mite-A-Thol	1	Individually wrapped	\$4.50	0.2
MC301	Mite-A-Thol	1	10 pk	\$33.95	2
MC410	Apistan Strips	1	10 pk	\$33.95	1
MC420	Check Mite	1	10 pk For Hive Beetle & Varroa	\$35.50	1
MC423	Api Life Var Thymol Strips	1	10 Pack contains 20 wafers	\$36.95	1
MC916	Fumagilin-B	1	1 1/2 gram bottle	\$18.25	1
MC917	Tylan Soluble	1	To control American Foulbrood	\$43.95	2
MC424	Corregated Plastic for Check Mite	1	For Small Hive Beetle Treatment	\$0.50	5
MC440	Sticky Board	1		\$7.65	1
MC800	Para-Moth	1	1 lb.	\$13.95	2
MC815	Fisher's Bee Quick 7 oz.	1	Easy Bee Removal Without Foul Odors	14.95	1
MC810	Honey Robber	1	1 pt.	14.95	6
MC812	Honey Robber	1	1 gal.	72.95	27
MC814	Fume Board	1	For Use With Honey Robber	16.95	3

<u>CAT.#</u>	<u>ITEM</u>	<u>DESCRIPTION</u>			
<u>CONTAINERS & JARS</u>					
<u>Glass Containers</u>					
CN008LX2	8 oz. Classic Glass Jars	1	cs. 24 With White Metal Lids	\$17.95	Truck
CN010LX1	1 lb. Classic Glass Jars	1	cs. 12 With White Metal Lids	\$13.95	Truck
CN010LX2	1 lb. Classic Glass Jars	1	cs. 24 With White Metal Lids	\$19.95	Truck
CN020LX1	2 lb. Classic Glass Jars	1	cs. 12 With White Metal Lids	\$15.95	Truck
<u>Plastic Containers</u>					
CN009L	8 oz. Clear Plastic Classic Jars	1	With Yellow Flip Lid and Pressure Seal	\$0.63	0.2
CN011L	1 lb. Clear Plastic Classic Jars	1	With Yellow Flip Lid and Pressure Seal	\$0.68	0.2
CN015L	1-1/2 lb. Clear Plastic Classic Jars	1	With Yellow Flip Lid and Pressure Seal	\$0.76	0.6
CN012X24	1 lb. Clear Plastic Queenline Jars	1	Case of 24 With White Lids & Bee Logo	\$13.95	3
CN022X12	2 lb. Clear Plastic Queenline Jars	1	Case of 12 With White Lids	\$13.60	4
CN600L	Honey Bear 12 oz.	1	Traditional With Yellow Flip Lid & Seal	\$0.62	0.6
CN610L	Honey Bear 12 oz.	1	Flat Front With Yellow Flip Lid & Seal	\$0.65	0.6
CN630L	Honey Angel With Flip Lid And Seal	1	John 3:16 Embossed On Back	\$0.74	0.7
CN050	Honey Jug 5 lb. Plastic	1	With White Cap	\$1.29	0.6
CN100L	1 Gallon Jug With Cap	1	Plastic	\$0.75	1
CN500	5 gal Square Jug With Cap	1	Plastic	\$10.95	3
CN550	5 gal Plastic Pail With Lid	1	White	\$10.95	11
CN900	Pail Opener For Plastic Pails	1	Metal	\$23.95	2

SOAPS & LOTIONS

SL001	Emu Soap	1	4oz. Bar benefits that will nourish your skin	\$6.50	1
SL002	Goats Milk Soap	1	4oz. Bar such a creamy Rich lather. Choose from the scents listed below.	\$5.50	1
SL003	Facial Scrubs	1	4oz. Bar body scrubs for mild exfoliation. Choose from the following scents: Ocean w/Jojoba Beads, Lavender w/Jojoba Beads and Honey & Oatmeal w/Oatmeal.	\$6.00	1
SL004	Body Scrubs	1	4oz. Bar body scrubs for mild exfoliation. Choose from the following scents: Tulip w/Cranberry Seeds, Peach w/Lemon Zest, Honey & Oatmeal w/Oatmeal.	\$6.00	1
SL005	Sugar Scrub	1	5oz. jar to nourish and moisture your skin. Choose from the scents listed below.	\$11.00	1
SL006	Body Butter	1	4oz. Jar a treat for your skin and senses. Choose from the following scents: Soothing Expressions, Summer Delights and Unscented	\$15.25	1
SL007	Foot Cream	1	4oz. Jar very rich and creamy	\$8.00	1
SL008	Lotions	1	8oz. Bottle very rich and creamy. Choose from the scents listed below.	\$10.00	1
SL009	Lip Balms	1	Our Lip Balms go on easy and stay put. Choose from the following flavors: Peppermint Burst, Cinnabliss, Cherry Surprise, and Raspberry Cream.	\$2.75	1

OUR SCENT GUIDE

Lavender - A touch of camphor and complimented with soft floral notes and Vanilla. Sweet and woody notes enhance this sophisticated flower. This is a nice sweet lavender.

Lavender Amber – We took Lavender and added just a hint of musk.

Ocean - Pure & fresh with soft scents of cotton, mandarin blossom and freesia blended with a hint of peony

Tulip - Clean & crisp, this fragrance is a blend of tulips, peonies, and fresh water. Its natural beauty invokes memories of a sunny spring day!

Soothing Expressions – This relaxing blend is a lovely combination! It is sandalwood, vanilla with floral undertones. What a heavenly combination..

Summer Delight – An array of spring time blossoms with hints of honeysuckle, topped off with undertones of citrus.

Honey Oatmeal – This is a decadent combination of honey, oatmeal and vanilla. If you think it smells yummy enough to eat, wait until you use it!!

Lemon Verbena Mint – We took lemon, citrus, vanilla, and just a hint of mint to make this lovely scent. It always reminds me of a lemon chiffon cake!

Georgia Peach – Smells just like a ripe fresh peach you have just picked off the peach tree and sliced it!

Eucalyptus Peppermint – A blend of eucalyptus and peppermint make this wonderful scent.

Coconut Lime Verbena – We took Coconut, lime, and mixed with citrus and a splash of floral to make this tantalizing scent.

Confetti – Is a mixture, cuttings we take from all our soaps to bring you this one amazing soap. The fragrance is a little bit of everything! Believe it or not, it really smells wonderful!

Paradise – Is a wonderful combination of Papaya, Mango, Citrus, and just the right amount of floral.

Tiny Whispers – This is such a wonderful scent! It is a combination of Vanilla, a dab of wood and hints of floral and sugar. It is a very different and very wonderful!

SERVICES AND RENTALS

SR200	Assembley of Equipment	Per Box Price	\$15.00
SR400	Extractor Rental: 6 Frame Semi-Radial	Rent for the Weekend	\$40.00
SR420	Electric Uncapping Knife Rental	Rent for the Weekend	\$18.00
SR500	HoneyBee Removal Service	Removals from Home & Office	Call